

# CHEETAH® JUNIOR WITH NIKE SOLE



Custom-built, high-performance carbon fiber foot designed primarily for sporting activities.

This is the optimal run and play foot for both transtibial and transfemoral users. It attaches posterior to the socket, making it agile, strong and a proven performer for those children who want to practice sports.

The Nike Sole is designed to offer increased stability and smooth natural rollover.



User Information	
Amputation Level:	Transfemoral and Transtibial
Impact Level:	High to Extreme
Maximum Patient Weight:	55Kg (121 lbs)

PROPORTIONAL RESPONSE

ACTIVE TIBIAL PROGRESSION

WATERPROOF

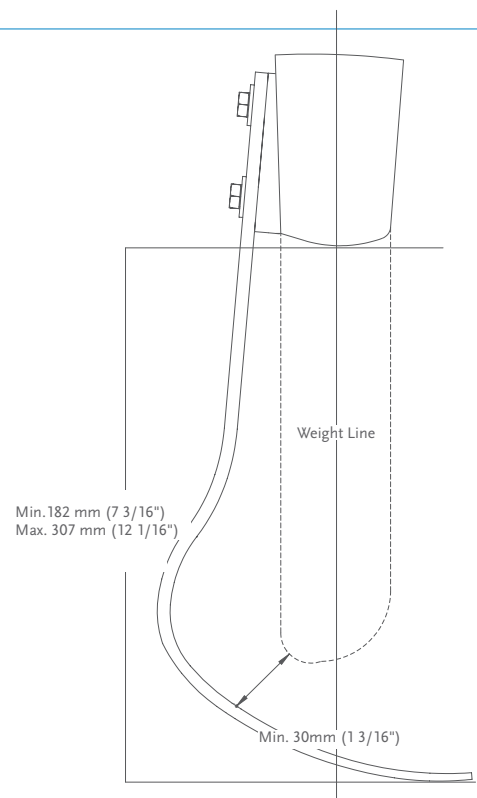
Foot information	
Categories:	1-4
Sizes:	One Size
Weight of Foot:	232g (8.2 oz)
Build Height:	Min: 182 mm (7 3/16) Max: 307 mm ( 12 1/16)
Adapter Options:	Lamination Connector

## CATEGORY SELECTION CHART

Weight kg	15-24	25-34	35-45	46-55
Weight lbs	33-53	54-75	76-99	100-121
High to Extreme Impact Level	1	2	3	4

# CHEETAH® JUNIOR WITH NIKE SOLE

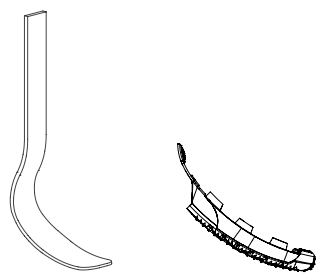
## CLEARANCE



## KITS

### CHEETAH KIT

PART#	CATEGORY (1-4)
CJX0	00



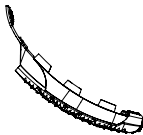
# CHEETAH® JUNIOR WITH NIKE SOLE

## KITS

### NIKE SOLE JUNIOR VERSION KIT

Part#	Size	Cat.
CM150164	One Size	1-4

- Includes:
- Nike Sole
  - Medallion
  - Loctite
  - Inside Sole
  - Bag for Nike Sole



## COMPONENTS

Part#	Description
CHX50001	Connector Kit

