

ANKLE REMOVAL (ACCESS TO REAR BUMPER, ANKLE BUSHINGS AND MIDSTANCE PAD)

- 1 Use the FootHorn to don/doff the foot shell. Remove the CPI Sock and replace as needed.
- 2 Use a 6 mm and 4 mm hex keys to remove the axial pin screw.
- 3 Attach the pin guide to the axial pin. Push and rotate clockwise.
- 4 Unscrew the axial pin from the pin guide and remove it from the ankle bone.
- 5 Remove the ankle bone to access the rear bumpers, ankle bushings and midstance pad.
- 6 For re-assembly, lubricate the axial pin, inside and outside of the ankle bushings, ankle bushing pocket and the contact surface of the Midstance Pad, then reverse steps 1-4.
Apply loctite 242 (blue) to axial pinscrew, and torque the axial pin screw to 4 N·m (36 in·lbs).



DO NOT lubricate front and rear bumpers.

FOREFOOT REMOVAL (ACCESS TO FRONT BUMPER AND LOWER BUSHINGS)

- 1 To remove the PreLoad Insert, position the PreLoader Tool on the foot to remove the load off of the insert. Tighten the handle down on the forefoot then swing the cam lever to either side. For detailed instructions refer to the Preloader Tool TechTip.
- 2 Remove the front bumper and axial pin as instructed (above) for the Ankle Bone.
- 3 Remove the forefoot bone to access the lower bushings.
- 4 For re-assembly, lubricate the axial pin, inside and outside of the lower bushings, then reverse steps 1-4.
Apply loctite 242 (blue) to axial pinscrew, and torque the axial pin screw to 4 N·m (36 in·lbs)

WARRANTY INSPECTION AND MAINTENANCE INFORMATION

College Park recommends that you schedule your patients for check-ups according to the warranty inspection schedule below.

High patient weight and/or impact level may require more frequent inspections. Soft component wear depends on the patient weight, impact level and environment. We recommend you inspect the following applicable parts for excessive wear and fatigue at each warranty inspection and replace as needed.

- Soft components (disassemble, inspect & re-lubricate)
- CPI Sock
- Composites and Adapters
- Foot Shell

WARRANTY INSPECTION SCHEDULE FOR TRUSTEP: SIX MONTHS, THEN ANNUALLY.

TECHNICAL ASSISTANCE / EMERGENCY SERVICE 24-7-365

College Park's regular office hours are Monday thru Friday, 8:30 AM – 5:30 PM (EST). After hours, an emergency Technical Service number is available to contact a College Park representative.



MADE IN THE USA CE
188 INS TS TIS 150430

COLLEGE PARK INDUSTRIES
27955 College Park Dr. Warren, MI 48088 USA

EMERGO EUROPE
Molenstraat 15, 2513 BH, The Hague, Netherlands

©2014 College Park Industries, Inc. All rights reserved. College Park, Trustep and Gait Matching are registered trademarks of College Park Industries. ALX, PinGuide, PreLoader, FootHorn, Integrated Pyramid and CPI Sock are trademarks of College Park Industries.

TECHNICAL INSTRUCTIONS



FEATURING:

- Tri-axial function
- Highly customizable
- Anatomical motion and comfort

PACKAGE CONTENTS	TOOLS REQUIRED
(1) Trustep Foot (1) Foot Shell (1) CPI Sock™ (1) Sealing Boot (upon request) (1) TruLube™ Lubricant (1) Exo Block Kit (Exo Only)	#2 Phillips Screwdriver Torque Wrench 4 mm and 6 mm Hex Keys FootHorn™ Pin Guide™ Preloader Tool™ OPTIONAL Exo Pyramid Tool Kit (Exo Only)

FOOT COMPONENTS

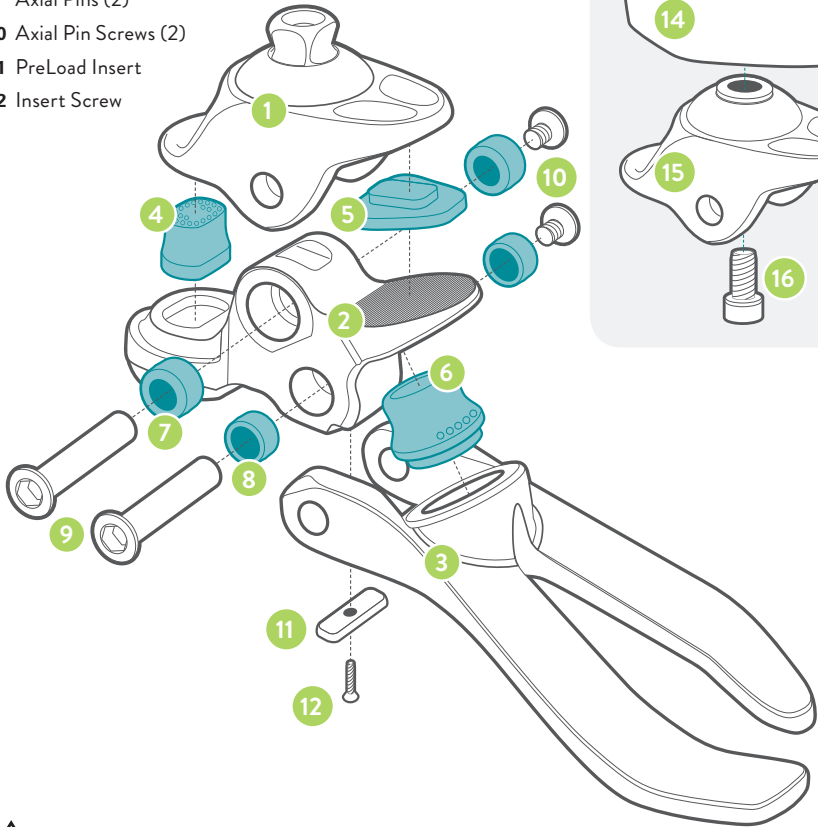
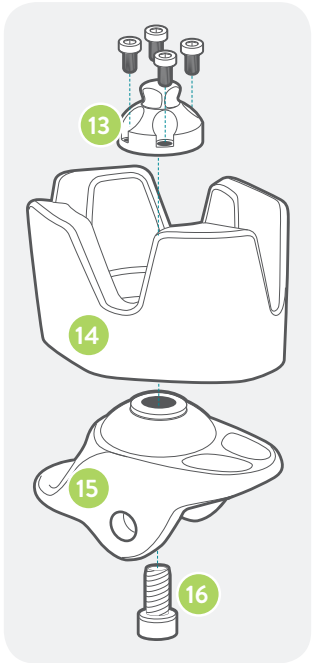
The following diagram is to help familiarize you with the Trustep's unique parts. They are referenced in the instructions, and used in assembling the foot or talking with technical service.

COMPONENTS

- 1 Ankle Bone
- 2 Heel Bone
- 3 Forefoot Bone
- 4 Rear Bumper
- 5 Midstance Pad
- 6 Front Bumper
- 7 Ankle Bushings (2)
- 8 Lower Bushings (2)
- 9 Axial Pins (2)
- 10 Axial Pin Screws (2)
- 11 PreLoad Insert
- 12 Insert Screw

OPTIONAL EXO MOUNT

- 13 Exo Pyramid Tool
- 14 Exo Block
- 15 Exo Ankle Bone
- 16 Exo Mounting Bolt
Torque 61 N·m (45 ft·lbs)



WARNING

Do not expose this product to pH extremes or corrosive materials (water, salt water or other liquids). Failure to follow these technical instructions or use of this product outside the scope of its Limited Warranty may result in injury to the patient or damage to the product. Disassembly, modification or removal from the foot shell, or any further disassembly or modification of components will void the warranty.

GENERAL INSTRUCTIONS

Endoskeletal Mounting

Use only high quality proximal endoskeletal components (30 mm).

Exoskeletal Mounting

- 1 Remove Exo Ankle Bone, then attach to College Park Exo Block with anti-rotation pin(s) oriented. Apply Loctite® 242 to mounting bolt. Torque to 61 N·m (45 ft·lbs). To skip alignment and lamination, go to Step 9.
- 2 If using the alignable Exo option, attach Exo Pyramid Tool to Exo Block with four 6 mm screws. Torque to 15 N·m (11 ft·lbs).
- 3 Attach 30 mm endo components to the Exo Pyramid Tool and temporarily mount the socket.
- 4 Re-attach the ankle bone to foot, donning CPI Sock and foot shell, then perform a dynamic alignment.
- 5 Remove foot from Exo Block.
- 6 Mount aligned prosthesis in transfer jig. Lock socket and Exo Block in position.
- 7 Remove endo components and Exo Pyramid Tool.
- 8 Use desired method to span Exo Block to the socket and remove from jig. Shape and laminate to desired finish. Do not remove foam from the top of the Exo Block.
- 9 Re-attach ankle bone to heel bone. Re-assemble foot, don CPI Sock and foot shell.

Dynamic Adjustments

DESIRED RESULT	ALIGNMENT CHANGE	COMPONENT CHANGE
Firmer Toe Response	Plantarflex the Trustep or move load line posterior	Front Bumper up one step firmer
Softer Toe Response	Dorsiflex the Trustep or move load line anterior	Front Bumper down one step softer or use MIN Insert
Firmer Heel Response	Dorsiflex the Trustep or move load line anterior	Rear Bumper up one step firmer
Softer Heel Response	Plantarflex the Trustep or move load line posterior	Rear Bumper down one step softer
Increase/Decrease Rotation, Inversion or Eversion	—	Change Ankle Bushings

Static Alignment

For optimal function have the patient's weight balanced between the forefoot and heel. The load line divides the foot at 1/3 heel lever and 2/3 toe lever.

GAIT MATCHING® GUIDELINES

Contact College Park Technical Service if you have questions about modifying the gait match.

See the Foot Assembly / Disassembly video on our YouTube channel at:
www.YouTube.com/CollegeParkInd