

# The Spine Line

Complete support from C1 to S1



Quality for life





## Your partner for complete spinal solutions

Give your patients the superior support and stabilization backed by nearly 100 years of excellence in O&P. When you partner with Ottobock, we can help you provide a higher level of care to help your patients walk farther and recover faster. Tap into a complete line of spinal and cervical solutions for your patients' needs.





## Cervical Table of Contents



50C91 Smartspine Universal Collar .....	6
---	---

## TLSO Table of Contents



50R320N Cyberspine™ TLSOx4 .....	7
----------------------------------	---



50R152N Ottobock TLSO .....	8
-----------------------------	---



50R73 Extension Orthosis .....	9
--------------------------------	---



28R128 Hyper-X Plus .....	10
---------------------------	----

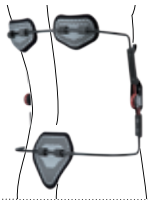


28R27 Cybercross TLSO .....	11
-----------------------------	----



28R140N Dorso Arexa .....	12
---------------------------	----

## LO and LSO Table of Contents



50R300 Dyneva .....	13
---------------------	----



50R218N=1 Option 1 .....	14
--------------------------	----



50R218N=2 Option 2 .....	15
--------------------------	----



50R218N=3 Option 3 .....	16
--------------------------	----



50R319N=627 Multi 627 .....	17
-----------------------------	----



50R319N=631 Multi 631 .....	18
-----------------------------	----



50R319N=637 Multi 637 .....	19
-----------------------------	----



50R216N Pathway .....	20
-----------------------	----



50R215N Passport .....	21
------------------------	----



50R153N Fulcrum .....	22
-----------------------	----

## SO Table of Contents



50R159N SI Belt .....	23
-----------------------	----

# Spine

## Cervical Orthoses

### Smartspine Universal Collar

**50C91** | Semi-rigid collar with thoracic extension



PDAC Verified L0174

**Universally sized collar reduces inventory, storage space, and overall costs while providing superior long-term patient support.**

#### Features

- Height adjusts in nine different positions using patented VHP (Variable Height Positioning) technology to ensure optimal patient fitting
- Collar secures in place with dual quick locks to prevent patient tampering and adjustment
- Simple two-piece design for easy fitting and patient reapplication
- Supportive yet flexible material can be heat molded and customized for individual patient fitting
- Vented design and breathable foam liner improve airflow and patient comfort
- Additional pad set included for patient hygiene

#### Indications

Indicated for cervical injuries, cervical disk herniation, severe strains and sprains, and severe radiculopathy.

**Part no. 50C91**

Measure waist circumference.

**Size**

**Height**

**Part Number**

Universal

2.5"-5" (6.5-12.5 cm)

50C91

# Cyberspine™ TLSOx4

**50R320N** | Premium TLSO (T2-S1) with Lateral Control



PDAC Verified L0464



Anterior

**TLSO offers superior compression and stabilization from T2 to S1 with lateral control.**

### Features

- Universal sizing option reduces inventory and overall costs
- Molded side stabilizing panels for lateral control
- Tool-free linear thoracic adjustment and adjustable articulating sternal pads
- Soft and padded shoulder straps with quick-release buckles
- Unsurpassed compression and support with a 5:1 mechanical advantage pulley system
- One-hand pull system compresses and cones to individual patient anatomy
- Posterior panel incorporates a spinal relief cutout
- Low-profile corset and panels for increased patient compliance
- Modular step-down system is ideal for treatment pre-op, post-op, and throughout rehabilitation
- Mesh corset and breathable anterior and posterior panels for increased patient comfort

### Indications

An adjunct to pre- and post-operative procedures, for acute pain relief by thoracic postural extension alignment, for early onset through variable stages of osteoporosis, for compression fractures of the thoracic spine, kyphosis, and thoracic mechanical back pain.

#### Part no. 50R320N

Measure waist circumference.

Size	Waist Circumference	Part Number
Universal	Up to 55" (139.5 cm)	50R320N=U
S	25"-30" (63.5-76 cm)	50R320N=S
M	30"-35" (76-89 cm)	50R320N=M
L	35"-40" (89-101.5 cm)	50R320N=L
XL	40"-45" (101.5-114.5 cm)	50R320N=XL
XXL	45"-50" (114.5-127 cm)	50R320N=XL

# Spine

Thoracolumbar  
Sacral Orthoses

## Ottobock TLSO

**50R152N** | Premium TLSO (T2-S1)



PDAC verified L0456 or L0457



Anterior

**TLSO offers superior compression and stabilization from T2 to S1.**

### Features

- Tool-free linear thoracic adjustment and adjustable articulating sternal pads
- Soft and padded shoulder straps with quick-release buckles
- Unsurpassed compression and support with a 5:1 mechanical advantage pulley system
- One-hand pull system compresses and cones to individual patient anatomy
- Posterior panel incorporates a spinal relief cutout
- Low-profile corset and panels for increased patient compliance
- Modular step-down system is ideal for treatment pre-op, post-op, and throughout rehabilitation
- Mesh corset and breathable anterior and posterior panels for increased patient comfort

### Indications

An adjunct to pre- and post-operative procedures, for acute pain relief by thoracic postural extension alignment, early onset through variable stages of osteoporosis, compression fractures of the thoracic spine, kyphosis, and thoracic mechanical back pain.

#### Part no. 50R152N

Measure waist circumference.

Size	Waist Circumference	Part Number
S	25"-30" (63.5-76 cm)	50R152N=S
M	30"-35" (76-89 cm)	50R152N=M
L	35"-40" (89-101.5 cm)	50R152N=L
XL	40"-45" (101.5-114.5 cm)	50R152N=XL



# Extension Orthosis

## 50R73N | Hyperextension Support



**TLSO offers 5:1 compression for extension support.**

### Features

- Unsurpassed compression and support with a 5:1 mechanical advantage pulley system
- One-hand pull system compresses and conforms to individual patient anatomy
- Posterior panel can be customized for individual patient anatomy
- Low-profile corset and anterior panel for increased patient compliance
- Padded anterior and posterior panels for increased patient comfort
- Padded shoulder straps

### Indications

Indicated for prevention of unwanted spinal flexion of the thoracic and lumbar spine, compression fractures, and osteoporosis.

PDAC verified L0456 or L0457



Anterior

### Part no. 50R73N

Measure waist circumference.

Size	Waist Circumference	Part Number
S	30"-35" (76-89 cm)	50R73N=S
M	35"-40" (89-101.5 cm)	50R73N=M
L	40"-45" (101.5-114.5 cm)	50R73N=L
XL	45"-50" (114.5-127 cm)	50R73N=XL

# Spine

Thoracolumbar  
Sacral Orthoses

## Hyper-X Plus

**28R128** | Hyperextension Support



**Traditional design extends or hyperextends the thoracic spine with sagittal control.**

### Features

- Spring-loaded hinged pelvic band rotates as patients move from a seated to standing position and helps prevent migration
- Aluminum frame can be customized for individual patient anatomy
- Frame easily adjusts without removing screws in both linear and widths
- Quick-release closure system and secure locking latch
- Articulating sternal pad for increased patient comfort and compliance

### Indications

Indicated for prevention of unwanted spinal flexion of the thoracic and lumbar spine, compression fractures, and osteoporosis.

PDAC verified L0472



Posterior

### Part no. 28R128

Measure waist circumference.

Size	Hip Range	Height Range	Part Number
Small Short	31-35" (78.5-89 cm)	15-19" (38-48.5 cm)	28R128=SS
Small Regular	32-35" (78.5-89 cm)	17-19" (43-48 cm)	28R128=SR
Medium Short	35-40" (89-101.5 cm)	17-21" (43-53.5 cm)	28R128=MS
Medium Regular	36-40" (89-101.5 cm)	19-21" (48.5-53.5 cm)	28R128=MR
Large Short	40-44" (101.5-112 cm)	19-21" (48.5-53.5 cm)	28R128=LS
Large Regular	41-44" (101.5-112 cm)	21-23" (53.5-58.5 cm)	28R128=LR

# Cybercross TLSO

**28R27** | Extension Orthosis (T2/T3 – S1)



PDAC Verified L0472



Anterior

**Anterior extension orthosis for control of the mid thoracic and lumbar spine, utilizing a three-point system.**

### Features

- Posterior support can be customized for individual patient anatomy using aluminum stay
- Quick-release closure system and secure locking latch
- Articulating pubic and sternal pads for increased patient comfort and compliance
- Tool-free, quick-pull height adjustments
- Soft waterproof padding for patient comfort

### Indications

Indicated for thoracic mechanical back pain, unintended thoracic flexion posture, prevention of pain associated with spinal anomalies, early onset through variable stages of osteoporosis, thoracolumbar injury, degenerative disc, compression fractures, and kyphosis.

#### Part no. 28R27

Measure waist circumference.

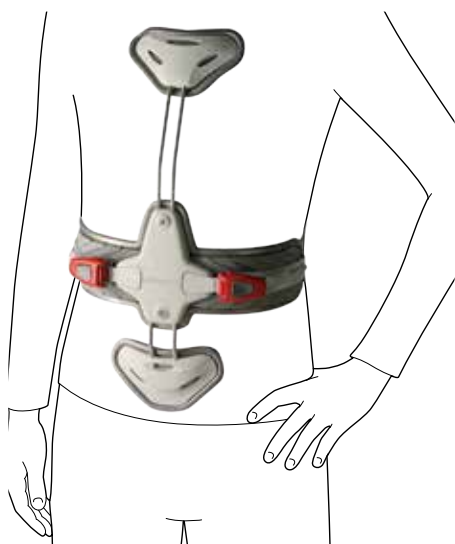
Size	Height Range	Part Number
Standard	14"-19" (35.5-48.26 cm)	28R27

# Spine

Thoracolumbar  
Sacral Orthoses

## Dorso Arexa

**28R140N** | Hyperextension Support



PDAC verified L0472



Posterior

**Anterior design uses a three-point pressure system to maintain spinal posture while preventing unwanted spinal flexion of the thoracic and lumbar spine.**

### Features

- Universal size fits up to 59" (150 cm) waist
- Adjust for height using clickable extension elements
- Ratchet closures ease donning and doffing
- Soft pads for increased patient comfort
- Water-resistant

### Indications

Indicated for prevention of unwanted spinal flexion of the thoracic and lumbar spine, compression fractures, and osteoporosis.

#### Part no. 28R140N

Measure waist circumference.

Size	Waist Circumference	Part Number
Universal	up to 59" (150 cm)	28R140N

# Dyneva

## 50R300 | Spinal flexion orthosis (T9 - S1)



PDAC verified L0635



Anterior

**LSO offers dynamic flexion of the lumbar spine from T9-S1.**

### Features

- Simple, customized fitting by an Orthotist
- Open frame design for optimal breathability and patient compliance
- Unique dynamic realignment spring adjusts torque applied for flexion of the lumbar spine
- Anterior pocket closure system eases donning and doffing
- Patient pull-tabs for abdominal compression
- Adjustable corset extension system for petite and pendulous sizing
- Semi-custom options allow adaptation for unique anatomies

### Indications

Indicated for pain relief of the lumbar spine caused by lumbar spinal stenosis, lumbar facet joint syndrome, lumbar radiculopathies, lumbar instability (spondylolisthesis and spondylolysis), spondylarthrosis, intervertebral disc herniation and protrusion in the lumbar spine, and general degenerative changes with reduced intervertebral disc height.

### Part no. 50R300

Measure waist circumference.

Size	Torso Width (A)	Torso Width (B)	Part Number
XS	Up to 10.6" (27 cm)	Up to 11.8" (30 cm)	50R300=XS
S	10.6"-11.8" (28-30 cm)	12"-13" (31-33 cm)	50R300=S
M	12"-13" (31-33 cm)	13.25"-14" (34-36 cm)	50R300=M
L	13.25"-14" (34-36 cm)	14.5"-15.25" (37-39 cm)	50R300=L
XL	14.5"-15.25" (37-39 cm)	15.75"-16.5" (40-42 cm)	50R300=XL
XXL	15.75"-16.5" (40-42 cm)	17"-17.75" (43-45 cm)	50R300=XXL

# Spine

## Lumbar Orthoses

### Option 1

**50R218N=1** | Universal LO



► PDAC verified L0627 or L642



Anterior

**Elastic LO offers support and compression from L1 to S1.**

#### Features

- Breathable elastic material for all-day wear
- Integrated plastic supports help stabilize the spine
- Adjustable elastic straps for increased compression and support
- Pocket closure system eases donning
- Anatomic design contours to the lordosis of the spine
- Optional breathable massaging pad promotes blood circulation and muscle function

#### Indications

Indicated for moderate stabilization of the lumbar spine.

**Part no. 50R218N=1**

Measure waist circumference.

Size	Waist Circumference	Part Number
Universal	25"-55" (63,5-139,5 cm)	50R218N=1
XL	Up to 65" (165 cm)	50R218N=1-XL



### Option 2

**50R218N=2** | Universal LSO (T9 - S1)



• PDAC L0631 or L0648



Anterior

**Universally sized LSO offers 5:1 compression and stabilization to fit most patients with one brace.**

#### Features

- New universal sizing reduces sizes on hand from 5:1, and the corset easily trims or folds to size
- Adjustable cord allows the pull tab to shorten or lengthen to fit every patient
- Anatomically contoured posterior panel can be heat molded and customized to fit individual patients, and the removable anterior panel provides ease of use
- Unique pulley system reduces friction and offers a 5:1 mechanical advantage, applying five pounds of intra-abdominal compression for each pound of pull
- Single one-hand pull self regulates compression to accommodate various girths and shapes for a more customized fit, and the corset flips for a right or left pull

#### Indications

Indicated for post-operative stabilization protocol following spina fusion, laminectomy/laminotomy, foraminotomy, laproscopic disk replacement, IDET procedures, multi-level decompression.

#### Part no. 50R218N=2

Measure waist circumference.

Size	Waist Circumference	Part Number
Universal	25"-55" (63.5-129.7 cm)	50R218N=2
XL	Up to 65" (165 cm)	50R218N=2-XL

# Spine

## Lumbar Sacral Orthoses

### Option 3

**50R218N=3** | Universal LSO (T9-S1) with Lateral Control



• PDAC L0637 or L0650



Anterior

**Universally sized LSO with lateral control offers 5:1 compression and stabilization to fit most patients with one brace.**

#### Features

- New universal sizing reduces sizes on hand from 5:1, and the corset easily trims or folds to size
- Adjustable cord allows the pull tab to shorten or lengthen to fit every patient
- Anatomically contoured posterior panel can be heat molded and customized to fit individual patients, and the removable anterior panel provides ease of use
- Unique pulley system reduces friction and offers a 5:1 mechanical advantage, applying five pounds of intra-abdominal compression for each pound of pull
- Single one-hand pull self regulates compression to accommodate various girths and shapes for a more customized fit, and the corset flips for a right or left pull

#### Indications

Indicated for post-operative stabilization protocol following spina fusion, laminectomy/laminotomy, foraminotomy, laproscopic disk replacement, IDET procedures, multi-level decompression.

**Part no. 50R218N=3**

Measure waist circumference.

Size	Waist Circumference	Part Number
Universal	25"-55" (63.5-139.5 cm)	50R218N=3
XL	Up to 65" (165 cm)	50R218N=3-XL

### Multi 627

**50R319N=627** | Universal LO (L1-S1)



PDAC verified L0627 or L0642



Anterior

**Universally sized LO offers superior 6:1 compression and stabilization to fit most patients with one brace.**

#### Features

- New universal sizing reduces size on hand from 6:1, and the corset easily adjusts to accommodate 25" (63.5cm) to 55" (129.7cm) waists using the unique pocket system
- Adjustable cord allows the pull tab to shorten or lengthen to fit every patient
- Anatomically contoured posterior panel can be heat molded and customized to fit individual patients, and the removable anterior panel provides ease of use
- Unique pulley system reduces friction and offers a 6:1 mechanical advantage, applying six pounds of intra-abdominal compression for each pound of pull
- Single one-hand pull self regulates compression to accommodate various girths and shapes for a more customized fit, and the corset flips for a right or left pull

#### Indications

Indicated for post-operative stabilization protocol following spinal fusion, laminectomy/laminotomy, foraminotomy, laproscopic disk replacement, IDET procedures, multi-level decompression.

#### Part no. 50R319N=627

Measure waist circumference.

Size	Waist Circumference	Part Number
Universal	25-55" (63.5-139.5 cm)	50R319N=627

# Spine

## Lumbar Sacral Orthoses

### Multi 631

**50R319N=631** | Universal LSO (T9-S1)



● PDAC verified L0631 or L0648



Anterior

**Universally sized LSO offers superior 6:1 compression and stabilization to fit most patients with one brace.**

#### Features

- New universal sizing reduces size on hand from 6:1, and the corset easily adjusts to accommodate 25" (63.5cm) to 55" (129.7cm) waists using the unique pocket system
- Adjustable cord allows the pull tab to shorten or lengthen to fit every patient
- Anatomically contoured posterior panel can be heat molded and customized to fit individual patients, and the removable anterior panel provides ease of use
- Unique pulley system reduces friction and offers a 6:1 mechanical advantage, applying six pounds of intra-abdominal compression for each pound of pull
- Single one-hand pull self regulates compression to accommodate various girths and shapes for a more customized fit, and the corset flips for a right or left pull

#### Indications

For post-operative stabilization protocol following spinal fusion, laminectomy/laminotomy, foraminotomy, laproscopic disk replacement, IDET procedures, multi-level decompression.

**Part no.**  
**50R319N=631**

Measure waist circumference.

Size	Waist Circumference	Part Number
Universal	25"-55" (63.5-139.5 cm)	50R319N=631

### Multi 637

**50R319N=637** | Universal LSO (T9-S1) with Lateral Control



PDAC verified L0637 or L0650



Anterior

**Universally sized LSO with lateral control offers superior 6:1 compression and stabilization to fit most patients with one brace.**

#### Features

- New universal sizing reduces size on hand from 6:1, and the corset easily adjusts to accommodate 25" (63.5cm) to 55" (129.7cm) waists using the unique pocket system
- Adjustable cord allows the pull tab to shorten or lengthen to fit every patient
- Anatomically contoured posterior panel can be heat molded and customized to fit individual patients, and the removable anterior panel provides ease of use
- Unique pulley system reduces friction and offers a 6:1 mechanical advantage, applying six pounds of intra-abdominal compression for each pound of pull
- Single one-hand pull self regulates compression to accommodate various girths and shapes for a more customized fit, and the corset flips for a right or left pull

#### Indications

For post-operative stabilization protocol following spinal fusion, laminectomy/laminotomy, foraminotomy, laproscopic disk replacement, IDET procedures, multi-level decompression.

**Part no. 50R319N=637**

Measure waist circumference.

Size	Waist Circumference	Part Number
Universal	25"-55" (63.5-139.5cm)	50R319N=637

# Spine

## Lumbar Orthoses

## Pathway

### 50R216N | Premium LO (L1-S1)



PDAC verified L0627 or L0642



Anterior

**LO offers 5:1 compression and stabilization from L1 to S1.**

#### Features

- Unsurpassed compression and support with a 5:1 mechanical advantage pulley system
- One-hand pull system compresses and conforms to individual patient anatomy
- Low-profile corset and panels for increased patient compliance
- Modular step-down system is ideal for treatment pre-op, post-op, and throughout rehabilitation
- Mesh corset and breathable anterior and posterior panels for increased patient comfort

#### Indications

Indicated for lumbar mechanical back pain, spinal stenosis, degenerative disc, spondulolysis, spondylolisthesis, trauma, herniated/bulging disc, facet syndrome, and post-operative stabilization protocol following laminotomy, foraminotomy, IDET procedures, anterior laproscopic fusion, posterior lateral fusion, and multi-level decompression.

#### Part no. 50R216N

Measure waist circumference.

Size	Waist Circumference	Part Number
S	25"-30" (63.5-76 cm)	50R216N=1
M	30"-35" (76-89 cm)	50R216N=2
L	35"-40" (89-101.5 cm)	50R216N=3
XL	40"-45" (101.5-114.5 cm)	50R216N=4
XXL	45"-50" (114.5-127 cm)	50R216N=5
XXXL	50"-55" (127-139.5 cm)	50R216N=6



# Passport

**50R215N** | Premium LSO (T9-S1)



• PDAC verified L0631 or L0648



Anterior

**LSO offers 5:1 compression and stabilization from T9 to S1.**

### Features

- Unsurpassed compression and support with a 5:1 mechanical advantage pulley system
- One-hand pull system compresses and conforms to individual patient anatomy
- Low-profile corset and panels for increased patient compliance
- Modular step-down system is ideal for treatment pre-op, post-op, and throughout rehabilitation
- Mesh corset and breathable anterior and posterior panels for increased patient comfort

### Indications

Indicated for degenerative and bulging discs, lumbar sacral mechanical back pain, spinal stenosis, spondylolisthesis, facet syndrome, herniated/bulging discs, post-operative stabilization protocol following laminotomy, foraminotomy, IDET procedures, anterior laproscopic fusion, posterior lateral fusion, and multi-level decompression.

### Part no. 50R215N

Measure waist circumference .

Size	Waist Circumference	Part Number
S	25"-30" (63.5-76cm)	50R215N=1
M	30"-35" (76-89cm)	50R215N=2
L	35"-40" (89-101.5cm)	50R215N=3
XL	40"-45" (101.5-114.5cm)	50R215N=4
XXL	45"-50" (114.5-127cm)	50R215N=5
XXXL	50"-55" (127-139.5cm)	50R215N=6

# Spine

## Lumbar Sacral Orthoses

### Fulcrum

**50R153N** | Premium LSO (T9-S1) with Lateral Control



PDAC verified L0637 or L0650



Anterior

**LSO offers superior 6:1 compression and stabilization from T9 to S1 with lateral control.**

#### Features

- Unsurpassed compression and support with a 6:1 mechanical advantage pulley system
- One-hand pull system compresses and conforms to individual patient anatomy
- Low-profile corset and panels for increased patient compliance
- Modular step-down system is ideal for treatment pre-op, post-op, and throughout rehabilitation
- Mesh corset and breathable anterior, posterior, and lateral panels for increased patient comfort

#### Indications

Indicated for post-operative stabilization following spinal fusion, laminectomy/laminotomy, foraminotomy, laproscopic disc replacement, IDET procedures, and multi-level decompression, burst fracture and facet syndrome, and chronic and mechanical low back pain.

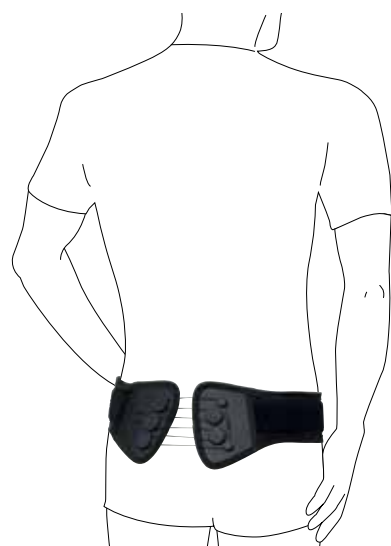
#### Part no. 50R153N

Measure waist circumference.

Size	Waist Circumference	Part Number
S	25"-30" (63.5-76 cm)	50R153N=S
M	30"-35" (76-89 cm)	50R153N=M
L	35"-40" (89-101.5 cm)	50R153N=L
XL	40"-45" (101.5-114.5 cm)	50R153N=XL
XXL	45"-50" (114.5-127 cm)	50R153N=XXL
XXXL	50"-55" (127-139.5 cm)	50R153N=XXXL

# SI Belt

**50R159N** | Classic SO (L5 - S1)



PDAC verified L0621



Anterior

**SO offers superior compression and stabilization from L5 to the coccyx.**

## Features

- Unsurpassed compression and support with a 5:1 mechanical advantage pulley system (low-profile is 3:1)
- One-hand pull system compresses and conforms to individual patient anatomy
- Ultra low-profile corset and panels for increased patient compliance
- Pressure pads can be adjusted or removed for increased patient comfort
- Mesh corset for increased patient comfort

## Indications

Indicated for sacroiliac joint pain or instability, symphyololysis, and arthritis.

### Part no. 50R159N

Measure waist circumference.

Size	Waist Circumference	Part Number
S	Up to 35" (89 cm)	50R159N=SMALL
Standard	35"-50" (89-127 cm)	50R159N=STANDARD
Universal	23"-50" (58.5-127 cm)	50R159N=U

