

Easy and comfortable access

into the prosthesis

Putting on a prosthesis is a daily routine task that can be very tedious. The better a prosthesis embraces the residual limb, the better it can support the prosthesis wearer.

Because the prosthesis and residual limb are closely connected, there is a lot of friction when the prosthesis is put on, which makes it difficult to put on and can cause a lot of physical strain on the arms, hands and shoulders. In addition, the skin of the residual limb is thin and particularly sensitive, so that it does not tolerate much friction. Enough reasons, therefore, to ensure that the residual limb is enclosed painlessly and stably by the prosthesis.



The donning aids **Arion Proth-Pro** and **Arion Proth-Pro ARM** are easy to use and consist of a smooth, soft but durable material, which reduces the friction between the residual limb and the prosthesis.

This contributes to a better contact between residual limb and prosthesis and thus to a more comfortable prosthesis.

### Key benefits

Easy, Safe and Simple solutions for wearers of prostheses with suction shafts.

- Better contact between residual limb and socket
- More comfortable fit of the prosthesis
- Less physical strain when putting on
- Available in different sizes
- Compact, lightweight and easy to carry



ARION  
Proth-Pro

ARION  
Proth-Pro



ARION  
Proth-Pro ARM



Easy and comfortable entry  
into the prosthesis

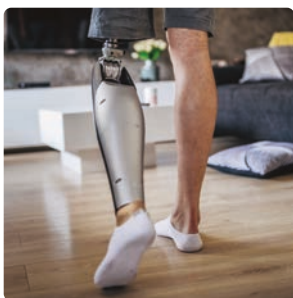
**Arion textile donning aids**  
for transfemoral, transradial and  
transhumeral prostheses with suction shaft

ARION  
SLIDE SOLUTIONS

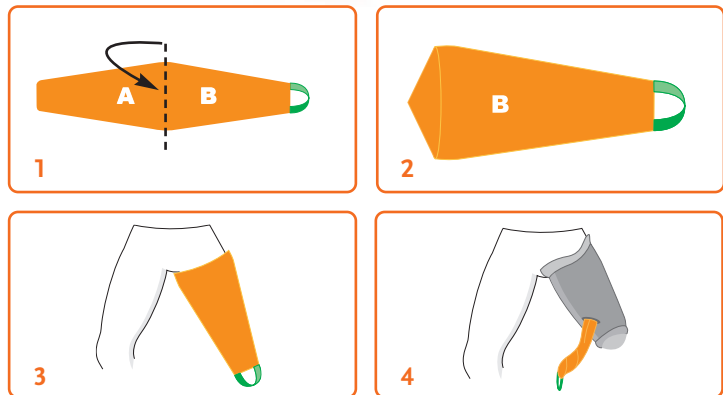
Arion Slide Solutions B.V.  
Rutherford 11 . 6422 RE Heerlen . NL  
Tel.: +49 241 955 09 350  
E-Mail: [slidesolutions@arion-group.com](mailto:slidesolutions@arion-group.com)  
[www.slide-solutions.com](http://www.slide-solutions.com)

TSS23156 EN (REV 01/2024)

ARION  
SLIDE SOLUTIONS



## Instructions I



I Use the Arion Easy-Proth Extender to slide the loop of the donning aid through the valve opening of the prosthesis.

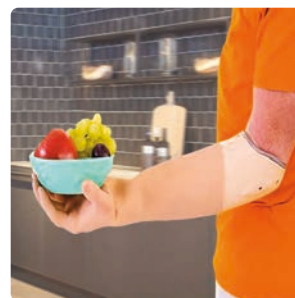
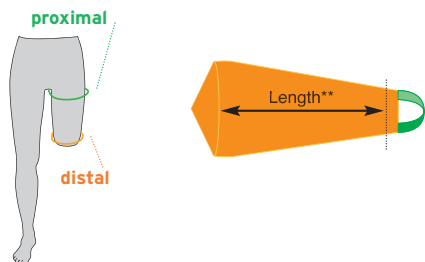
| REF    | Size              | Circumference of the upper leg* |             |         |             | Length of the product**<br>(inside part, shorter side) |        |
|--------|-------------------|---------------------------------|-------------|---------|-------------|--|--------|
|        |                   | proximal                        |             | distal  |             | cm   | inches |
|        |                   | cm                              | inches      | cm      | inches      |  |        |
| E02701 | Extra small       | < 39                            | < 15.5      | < 28    | < 11        | 39   | 15.5   |
| E02702 | Small             | 39 - 44                         | 15.5 - 17.5 | 29 - 31 | 11.5 - 12   | 40   | 15.5   |
| E02703 | Medium            | 45 - 56                         | 17.5 - 22   | 32 - 33 | 12.5 - 13   | 40   | 15.5   |
| E02704 | Large             | 57 - 68                         | 22.5 - 26.5 | 34 - 40 | 13.5 - 15.5 | 41   | 16     |
| E02705 | Extra large       | 69 - 78                         | 27 - 30.5   | 41 - 43 | 16 - 17     | 41   | 16     |
| E02706 | Extra extra large | ≤ 80                            | ≤ 31.5      | 41 - 43 | 16 - 17     | 56   | 22     |

## Instructions for use download:

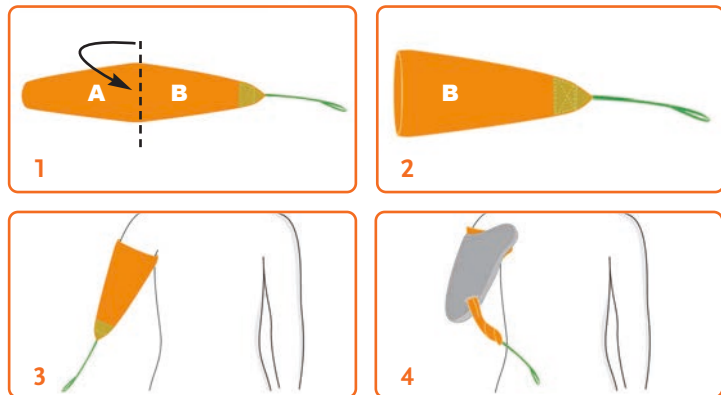


[http://uqr.to/IFU\\_Proth](http://uqr.to/IFU_Proth)

\* Circumference of the upper leg  
\*\* Length of the product (inside part, shorter side):



## Instructions II



II Arion Proth-Pro Arm is suitable for upper arm and forearm prostheses.

| REF    | Size   | Circumference of the arm residual* |             |         |           | Length of the product**     |        |
|--------|--------|------------------------------------|-------------|---------|-----------|-----------------------------|--------|
|        |        | proximal                           |             | distal  |           | (inside part, shorter side) |        |
|        |        | cm                                 | inches      | cm      | inches    | cm                          | inches |
| E03701 | Small  | < 28                               | < 11        | < 13    | < 5       | 19                          | 7.5    |
| E03702 | Medium | 29 - 45                            | 11.5 - 17.5 | 14 - 19 | 5.5 - 7.5 | 24                          | 9.5    |
| E03703 | Large  | 46 - 48                            | 18 - 19     | 20 - 26 | 8 - 10    | 34                          | 13.5   |

## Instructions for use download:



[http://uqr.to/IFU\\_ProthArm](http://uqr.to/IFU_ProthArm)

\* Circumference of the arm residual  
\*\* Length of the product (inside part, shorter side):

