



celsus® iVT

K2-3

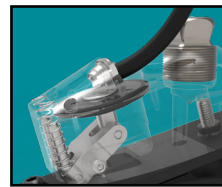
Comfort and Integrated Vacuum

Vacuum systems can be a great benefit for K2 patients, allowing them the ability to reduce limb volume fluctuations and pistoning^[1,2,3]. College Park's Integrated Vacuum Technology (iVT) is designed to pull up to 20 inHg in fewer steps, allowing patients to efficiently achieve optimal vacuum.* With enhanced suspension to the residual limb, this low-profile foot may improve comfort and overall limb health. The Celsus iVT also features Integrated Spring Technology (iST®) and Intelliweave® composites for energy, strength, and flexibility.

*Results may vary based on impact and activity. Maximum attainable vacuum ranges from 18-22 inHg.

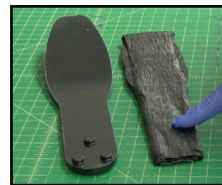


FEATURES:



EFFICIENT INTEGRATED VACUUM

With Integrated Vacuum Technology (iVT) in a low-profile design, a wide range of users could benefit from this enhanced suspension to the residual limb.



INTELLIWEAVE COMFORT



The Celsus iVT features Intelliweave composites, which use fibers woven by hand in a 3D pattern for durability and precision gait matching. Intelliweave helps the Celsus iVT meet a patient's unique specifications.



TOTAL GROUND CONTACT

The Celsus iVT uses a dynamic composite heel to help achieve advanced ground contact and smooth transitions. This foot's material and functional design allows it to have a long duration of foot flat during stance phase.

TECHNICAL SPECIFICATIONS

WEIGHT*	BUILD HEIGHT	WARRANTY	
652 g	21-24 cm 5.7 cm 25-26 cm 6.4 cm 27-30 cm 6.6 cm	2 years	
SIZES	IMPACT LEVEL	WEIGHT LIMIT	ENVIROSHIELD®†
21-30 cm		21-24 cm 100 kg 25-30 cm 136 kg	 standard

*26 cm model, including Enviroshell. † Caucasian, Tan or Brown.

1) Beil, T. L.; Street, G. M.; Covey, S. J. Interface pressure during ambulation using suction and vacuum-assisted prosthetic sockets. *J. Rehabil. Res. Dev.* 39(6):693-700; 2002.

2) Goswami, J.; Lynn, R.; Street, G.; Harlander, M. Walking in a vacuum-assisted socket shifts the stump fluid balance. *Prosthet. Orthot. Int.* 27(2):107-113; 2003.

3) Board, W. J.; Street, G. M.; Cospers, C. A comparison of trans-tibial amputee suction and vacuum socket conditions. *Prosthet. ORTHOT. INT.* 25(3):202-209; 2001



CELSUS iVT PART NUMBER

CS iVT

SIDE

L or R

(L) Left, (R) Right

SHELL COLOR*

C, B, or T

(C) Caucasian,
(B) Brown, (T) Tan

EN

SIZE

21-30

G

FIRMNESS
CATEGORY

1-4

CELSUS iVT FIRMNESS CATEGORIES

PATIENT WEIGHT	0-63 kg	64-81	82-100	101-136
SIZE	21-30 cm			25-30 cm
LOW - MODERATE	1	2	3	4

REQUIRED TUBE KIT

(Included with Foot Order)

iVT AK Tube Kit

iVT AK TBK

iVT BK Tube Kit

iVT BK TBK

