

**SB**  
soft bracing



**bledsoe**





## **FOOT AND ANKLE**

Ankle Braces and Supports	3
Post-op and Cast Shoes	3
Plantar Fasciitis Supports	4

## **KNEES**

Range of Motion Control	5
Knee Immobilizers	5
Hinged Knees	6
Knee Supports	8
Patellofemoral Braces and Supports	10

## **UPPER EXTREMITY**

Abduction Pillows	12
Shoulder Immobilizers	12
Arm Slings	12
Soft Cervical Collar	13
Clavicle Supports	13
Back Supports	13

## **ELBOW WRIST AND HAND**

Wrist Braces	14
Thumb Spicas	14
Tennis Elbow Supports	15

# WrapTOR

- Figure 8 design mimics traditional taping while High Ankle Strap secures stirrups
- Sharkskin material at the base of the foot reduces brace slippage
- Breathable spacermesh lining wicks moisture away from the skin

## Options

Regular or Speed Laces

## Measure

Based on shoe size.  
For wide feet, move up a size; for narrow feet, move down a size.

## Ordering Information

SA7025xx Regular Laces  
SA7020xx Speed Laces

	XS	S	M	L	XL	2XL
Men's	6-7	8-9	9-11	11-13	14+	14+ (wide)
Women's	7-8	9-10	10-12	12-14	15+	15+ (wide)
	xx = 01	xx = 03	xx = 05	xx = 07	xx = 09	xx = 11

Indications: Chronic and acute ankle sprains, abnormal inversion and eversion control, and as protective sportswear.



# Air MBrace Ankle Stirrup

- Enhances circulation and reduces swelling
- Hand pump included for optimal fit and compression
- Easily fits in most shoes

## Options

Black or white

## Measure

Universal size

## Ordering Information

ES040005 Black ES040005--M White  
ES042005 Black, 20 pack ES042005--M White, 20 pack  
ES045005 Black, 50 pack ES045005--M White, 50 pack

Indications: To provide support and reduce swelling of mild sprains.



# Gel MBrace Ankle Stirrup

- Enhances circulation and reduces swelling
- Gel bladder can be removed and chilled for cold therapy
- Easily fits in most shoes

## Options

Black or white

## Measure

Universal size

## Ordering Information

ES050005 Black ES050005--M White  
ES052005 Black, 20 pack ES052005--M White, 20 pack  
ES055005 Black, 50 pack ES055005--M White, 50 pack

Indications: To provide support and reduce swelling of mild sprains.



# Post-Op Shoe

- Protects foot after surgery
- Trimmable straps for easy application
- Large opening to accommodate dressings and swelling

## Measure

Shoe size

## Ordering Information

SA9000xx Men's  
SA9005xx Women's

	S	M	L
Men's	6 - 8	8 - 10	10 - 12
Women's	4 - 6	6 - 8	8 - 10
	xx = 03	xx = 05	xx = 07

Indications: For use following surgery or trauma to the foot.



# Cast Shoe

- Protects cast from dirt and wear
- No-skid sole
- Universal right or left

## Measure

Length and width of cast

## Ordering Information

SA9010xx Cast Shoe

	XS	S	M	L	XL
Length	7.25"	9.25"	11"	12.5"	13.5"
Width	3.5"	4.25"	4.75"	5"	6"
	xx = 01	xx = 03	xx = 05	xx = 07	xx = 09

Indications: For lower extremity casted fractures.



## PFS Plantar Fasciitis Strap

- Reduces Plantar Fasciitis pain through continuous elastic tension day or night
- Easily fits into most shoes for day-time wear
- Includes patient exercise program

### Measure

Shoe size

### Ordering Information

ES0071xx Left

ES0081xx Left, 10 pack

ES0072xx Right

ES0082xx Right, 10 pack

	S	M	L
Men's	0 - 8	8.5 - 11	11.5+
Women's	0 - 8.5	9 - 11.5	12+
	xx = 03	xx = 05	xx = 07

Indications: Plantar Fasciitis.



## Padded PF Splint

- Prevents tears in fibrous tissue that occur after a night of rest
- Padded footplate keeps the foot in dorsi-flexed position
- Soft foam for nighttime wear

### Measure

Shoe size

### Ordering Information

SA9025xx

Padded PF Splint

	S	M	L	XL	2XL
Men's	0 - 3.5	3.5 - 6.5	6.5 - 9.5	9.5 - 12.5	12.5+
Women's	0 - 4.5	4.5 - 7	7 - 10	10 - 13	13+
	xx = 03	xx = 05	xx = 07	xx = 09	xx = 11

Indications: Plantar Fasciitis, Achilles Tendonitis, plantar flexion contractures, and heel spurs.



## Night Splint

- Angled shell keeps the foot in dorsi-flexed position
- Straps tension for additional stretch
- Removable washable liner

### Measure

Shoe size

### Ordering Information

SA9020xx Night Splint

	S	M	L
Men's	0 - 7	7.5 - 10	10.5+
Women's	0 - 7.5	8 - 10.5	11+
	xx = 03	xx = 05	xx = 07

Indications: Plantar Fasciitis, Achilles Tendonitis, plantar flexion contractures, and heel spurs.



## Silicone Heel Cups

- Dual density medical-grade silicone to absorb heel pressure
- Soft silicone center cushions sensitive areas
- Use in dress or athletic shoes

### Measure

Shoe size

### Ordering Information

SA9030xx

Silicone Heel Cups (Pair)

	S	M	L
Men's	0 - 7	7.5 - 10	10.5+
Women's	0 - 7.5	8 - 10.5	11+
	xx = 03	xx = 05	xx = 07

Indications: For heel spurs, leg pain, general foot fatigue, Plantar Fasciitis and Achilles Tendonitis.





# Crossover ROM

- Easily adjustable ROM hinges for ideal anatomical placement
- Adjustable hinge controls flexion and extension from  $-10^{\circ}$  to  $110^{\circ}$
- Front closure wraparound design for easy application
- Cool breathable spacermesh material
- Sport hinges and straps convert Crossover ROM to Crossover (see page 6 for Crossover)



## Measure

Thigh 6 inches above mid-patella

## Ordering Information

RK0900xx Crossover ROM  
RK0663xx Sport Hinges and Straps

XS	S	M	L	XL	2XL
15" - 17.5"	17.5" - 20"	20" - 22.5"	22.5" - 25"	25" - 27.5"	27.5" - 29"
xx = 01	xx = 03	xx = 05	xx = 07	xx = 09	xx = 11

Indications: For locked or limited motion control during rehabilitation after arthroscopic procedures or injury.

# Three Panel Immobilizer

- Fits and shapes to leg using medial and lateral stays
- Circumference adjusts up to 30" thigh
- Terry cloth interior for added patient comfort

## Options

Various lengths

## Measure

Universal size

## Ordering Information

SA6080xx Three Panel Knee Immobilizer

12"	16"	18"	20"	24"
xx = 12	xx = 16	xx = 18	xx = 20	xx = 24

Indications: For sprains and strains of the knee; ACL, PCL, MCL, LCL, and soft tissue injuries where immobilization is needed.



# Single Panel Immobilizer

- Lightweight breathable foam
- Circumference adjusts up to 30" thigh
- Elastic straps reduce migration

## Options

Various lengths

## Measure

Universal size

## Ordering Information

SA6070xx Single Panel Knee Immobilizer

12"	16"	18"	20"	24"
xx = 12	xx = 16	xx = 18	xx = 20	xx = 24

Indications: For sprains and strains of the knee; ACL, PCL, MCL, LCL, and soft tissue injuries where immobilization is needed.

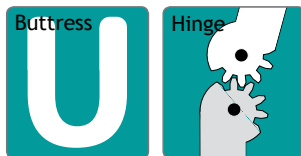


## Crossover

- Heavy duty polycentric hinges (extension stops available upon request)
- Removable hinges for ideal anterior/posterior placement
- 15" length for maximum control
- Open popliteal for patient comfort (spacermesh version)

### Options

- Spacermesh or Neoprene Material
- Front Closure and Pull-on Designs
- With or without Patellar Buttress



### Ordering Information

RK0610xx	Spacermesh Pull-on	RK0200xx--B	Neoprene Pull-on
RK0620xx	Spacermesh Pull-on w/Patellar Buttress	RK0210xx--B	Neoprene Pull-on w/Patellar Buttress
RK0600xx	Spacermesh Front Closure	RK0800xx--B	Neoprene Front Closure
		RK0810xx--B	Neoprene Front Closure w/Patellar Buttress

### Measure

Thigh 6" above mid-patella.

XS	S	M	L	XL	2XL
15" - 17.5"	17.5" - 20"	20" - 22.5"	22.5" - 25"	25" - 27.5"	27.5" - 29"
xx = 01	xx = 03	xx = 05	xx = 07	xx = 09	xx = 11

Indications: For mild ACL, PCL, and MCL sprains, menisci and patellar retinaculum injuries, and mild instabilities.



## Crossover Short

- Same features and benefits as our Crossover Brace in a shorter 13" length



### Options

- Spacermesh or Neoprene Material
- Front Closure and Pull-on Designs
- With or without Patellar Buttress

### Ordering Information

RK0640xx	Spacermesh Pull-on
RK0650xx	Spacermesh Pull-on w/Patellar Buttress
RK0630xx	Spacermesh Front Closure
RK0100xx--B	Neoprene Pull-on
RK0110xx--B	Neoprene Pull-on w/Patellar Buttress
RK0700xx--B	Neoprene Front Closure
RK0710xx--B	Neoprene Front Closure w/Patellar Buttress

### Measure

Thigh 6" above mid-patella.

XS	S	M	L	XL	2XL
15" - 17.5"	17.5" - 20"	20" - 22.5"	22.5" - 25"	25" - 27.5"	27.5" - 29"
xx = 01	xx = 03	xx = 05	xx = 07	xx = 09	xx = 11

Indications: For mild ACL, PCL, and MCL sprains, menisci and patellar retinaculum injuries, and mild instabilities.



## Hinged Knee

- Removable polycentric hinges (Extension stops available upon request)
- Adjustable horseshoe buttress can be positioned and trimmed for multiple applications
- Open popliteal for patient comfort



### Options

Spacermesh or Neoprene Material

### Measure

Thigh 6" above mid-patella

### Ordering Information

RK1003xx	Spacermesh
RK1623xx	Neoprene

XS	S	M	L	XL	2XL
15" - 17.5"	17.5" - 20"	20" - 22.5"	22.5" - 25"	25" - 27.5"	27.5" - 29"
xx = 01	xx = 03	xx = 05	xx = 07	xx = 09	xx = 11

Indications: For sore, strained or sprained knee ligaments and patella tracking support.



# Hinged Knee FT

- Same features and benefits as our Hinged Knee in a pull-on calf and front closure thigh design
- Allows for adjustable fit for patients with irregular legs



## Options

Spacermesh or Neoprene Material

## Measure

Thigh 6" above mid-patella

## Ordering Information

RK1813xx Spacermesh  
RK1823xx Neoprene

XS	S	M	L	XL	2XL
15" - 17.5"	17.5" - 20"	20" - 22.5"	22.5" - 25"	25" - 27.5"	27.5" - 29"
xx = 01	xx = 03	xx = 05	xx = 07	xx = 09	xx = 11

Indications: For sore, strained or sprained knee ligaments and patella tracking support.

# Hinged Knee FC

- Same features and benefits as our Hinged Knee in a wraparound front closure design
- Allows for quick and easy application



## Options

Spacermesh or Neoprene Material

## Measure

Thigh 6" above mid-patella

## Ordering Information

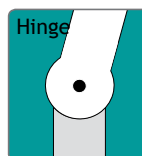
RK1713xx Spacermesh  
RK1723xx Neoprene

XS	S	M	L	XL	2XL
15" - 17.5"	17.5" - 20"	20" - 22.5"	22.5" - 25"	25" - 27.5"	27.5" - 29"
xx = 01	xx = 03	xx = 05	xx = 07	xx = 09	xx = 11

Indications: For sore, strained or sprained knee ligaments.

# Select Hinged Knee

- Removeable single point aluminum hinges
- Neoprene material for support, compression, and warmth
- Open popliteal for patient comfort



## Measure

Thigh 6" above mid-patella

## Ordering Information

RK1663xx Pull-on

XS	S	M	L	XL	2XL
15" - 17.5"	17.5" - 20"	20" - 22.5"	22.5" - 25"	25" - 27.5"	27.5" - 29"
xx = 01	xx = 03	xx = 05	xx = 07	xx = 09	xx = 11

Indications: For sore, strained or sprained knee ligaments.

# Select Hinged Knee FC

- Same features and benefits as our Select Hinged Knee in a wraparound front closure design
- Allows for quick and easy application



## Measure

Thigh 6" above mid-patella

## Ordering Information

RK1763xx Neoprene

XS	S	M	L	XL	2XL
15" - 17.5"	17.5" - 20"	20" - 22.5"	22.5" - 25"	25" - 27.5"	27.5" - 29"
xx = 01	xx = 03	xx = 05	xx = 07	xx = 09	xx = 11

Indications: For sore, strained or sprained knee ligaments.



## Padded Knee Support

- Patella cutout
- Anterior pad provides additional warmth and compression
- Open popliteal for patient comfort

### Options

Spacermesh or Neoprene  
Material

### Measure

Thigh 6" above  
mid-patella

### Ordering Information

SA6270xx Spacermesh  
SA6170xx Neoprene

XS	S	M	L	XL	2XL
13" - 15.5"	15.5" - 18.5"	18.5" - 21"	21" - 23.5"	23.5" - 26.5"	26.5" - 29.5"
xx = 01	xx = 03	xx = 05	xx = 07	xx = 09	xx = 11

Indications: For sore, strained or sprained knee ligaments.



## Adjustable Horseshoe

- Adjustable horseshoe buttress can be positioned and trimmed for multiple applications
- Anterior pad provides additional warmth and compression
- Open popliteal for patient comfort



### Options

Spacermesh or Neoprene  
Material

### Measure

Thigh 6" above  
mid-patella

### Ordering Information

SA6280xx Spacermesh  
SA6180xx Neoprene

XS	S	M	L	XL	2XL
13" - 15.5"	15.5" - 18.5"	18.5" - 21"	21" - 23.5"	23.5" - 26.5"	26.5" - 29.5"
xx = 01	xx = 03	xx = 05	xx = 07	xx = 09	xx = 11

Indications: For sore, strained or sprained knee ligaments and patella tracking support.



## Patella Donut



- Sewn-in tubular donut buttress
- Anterior pad provides additional warmth and compression
- Open popliteal for patient comfort

### Options

Spacermesh or Neoprene  
Material

### Measure

Thigh 6" above  
mid-patella

### Ordering Information

SA6260xx Spacermesh  
SA6261xx Neoprene

XS	S	M	L	XL	2XL
13" - 15.5"	15.5" - 18.5"	18.5" - 21"	21" - 23.5"	23.5" - 26.5"	26.5" - 29.5"
xx = 01	xx = 03	xx = 05	xx = 07	xx = 09	xx = 11

Indications: For sore, strained or sprained knee ligaments and patella tracking support.



## Spacermesh Material

- Three dimensional breathable material
- Wicks moisture and heat away from the skin
- Ideal for warmer climates





# Knee Support

- Low profile 13" sleeve
- Neoprene material for support, compression, and warmth

## Measure

Thigh 6" above  
mid-patella

## Ordering Information

SA6090xx Neoprene

XS	S	M	L	XL	2XL
13" - 15.5"	15.5" - 18.5"	18.5" - 21"	21" - 23.5"	23.5" - 26.5"	26.5" - 29.5"
xx = 01	xx = 03	xx = 05	xx = 07	xx = 09	xx = 11

Indications: For sore, strained or sprained knee ligaments.

# Select Patella Cutout

- Patella cut-out
- Open popliteal for patient comfort
- Neoprene material for support, compression and warmth

## Measure

Thigh 6" above  
mid-patella

## Ordering Information

SA6370xx Neoprene

XS	S	M	L	XL	2XL
13" - 15.5"	15.5" - 18.5"	18.5" - 21"	21" - 23.5"	23.5" - 26.5"	26.5" - 29.5"
xx = 01	xx = 03	xx = 05	xx = 07	xx = 09	xx = 11

Indications: For sore, strained or sprained knee ligaments.

# Select Horseshoe Patella

- Adjustable horseshoe buttress can be positioned and trimmed for multiple applications
- Open popliteal for patient comfort
- Neoprene material for support, compression and warmth



## Measure

Thigh 6" above  
mid-patella

## Ordering Information

SA6360xx Neoprene

XS	S	M	L	XL	2XL
13" - 15.5"	15.5" - 18.5"	18.5" - 21"	21" - 23.5"	23.5" - 26.5"	26.5" - 29.5"
xx = 01	xx = 03	xx = 05	xx = 07	xx = 09	xx = 11

Indications: For sore, strained or sprained knee ligaments and patella tracking support.

# Select Knee Support

- Low profile 13" sleeve
- Neoprene material for support, compression, and warmth

## Measure

Thigh 6" above  
mid-patella

## Ordering Information

SA6390xx Neoprene

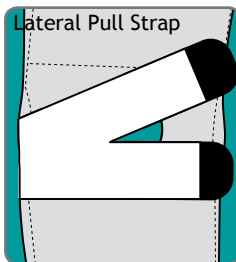
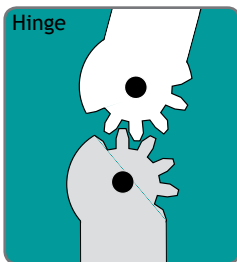
XS	S	M	L	XL	2XL
13" - 15.5"	15.5" - 18.5"	18.5" - 21"	21" - 23.5"	23.5" - 26.5"	26.5" - 29.5"
xx = 01	xx = 03	xx = 05	xx = 07	xx = 09	xx = 11

Indications: For sore, strained or sprained knee ligaments.



# Hinged LPS

- Removable polycentric hinges (*Extension stops available upon request*)
- Lateral pull strap and patellar buttress for patellar stabilization
- Open popliteal for patient comfort



## Options

Spacermesh or Neoprene Material

## Ordering Information

RK1731xx	Spacermesh, Left	RK1831xx	Neoprene, Left
RK1732xx	Spacermesh, Right	RK1832xx	Neoprene, Right

## Measure

Thigh 6" above mid-patella

XS	S	M	L	XL	2XL
15" - 17.5"	17.5" - 20"	20" - 22.5"	22.5" - 25"	25" - 27.5"	27.5" - 29"
xx = 01	xx = 03	xx = 05	xx = 07	xx = 09	xx = 11

Indications: For sore, strained or sprained knee ligaments and patella tracking support.

# Lateral Patella



- Tubular lateral "J" buttress for patellar stabilization
- Angular strapping for added stability
- Maximum adjustability with medial pile design
- Two medial and two lateral flexible spiral stays

## Options

Spacermesh or Neoprene Material

## Measure

Thigh 6" above mid-patella

## Ordering Information

SA6211xx	Spacermesh, Left
SA6212xx	Spacermesh, Right
SA6111xx	Neoprene, Left
SA6112xx	Neoprene, Right

XS	S	M	L	XL	2XL
13" - 15.5"	15.5" - 18.5"	18.5" - 21"	21" - 23.5"	23.5" - 26.5"	26.5" - 29.5"
xx = 01	xx = 03	xx = 05	xx = 07	xx = 09	xx = 11

Indications: Patellofemoral disorders including lateral patellar subluxation, dislocations, and lateral patellofemoral malalignment.



# Reinforced Patella



- Sewn-in tubular horseshoe buttress
- Adjustable circumferential straps provide stability and compression
- Two medial and two lateral flexible spiral stays

## Options

Spacermesh or Neoprene Material

## Measure

Thigh 6" above mid-patella

## Ordering Information

SA6240xx	Spacermesh
SA6140xx	Neoprene

XS	S	M	L	XL	2XL
13" - 15.5"	15.5" - 18.5"	18.5" - 21"	21" - 23.5"	23.5" - 26.5"	26.5" - 29.5"
xx = 01	xx = 03	xx = 05	xx = 07	xx = 09	xx = 11

Indications: To stabilize and improve patella tracking.





# Select Lateral Patella

- Tubular lateral “J” buttress for patellar stabilization
- Angular strapping for added stability
- Two medial and two lateral flexible spiral stays
- Neoprene material for support, compression, and warmth.



## Measure

Thigh 6" above  
mid-patella

## Ordering Information

SA6311xx Neoprene, Left  
SA6312xx Neoprene, Right

XS	S	M	L	XL	2XL
13" - 15.5"	15.5" - 18.5"	18.5" - 21"	21" - 23.5"	23.5" - 26.5"	26.5" - 29.5"
xx = 01	xx = 03	xx = 05	xx = 07	xx = 09	xx = 11

Indications: Patellofemoral disorders including lateral patellar subluxation, dislocations, and lateral patellofemoral malalignment.

# Select Reinforced Patella

- Sewn-in tubular horseshoe buttress
- Adjustable circumferential straps provide stability and compression
- Two medial and two lateral flexible spiral stays
- Neoprene material for support, compression, and warmth



## Measure

Thigh 6" above  
mid-patella

## Ordering Information

SA6340xx Neoprene

XS	S	M	L	XL	2XL
13" - 15.5"	15.5" - 18.5"	18.5" - 21"	21" - 23.5"	23.5" - 26.5"	26.5" - 29.5"
xx = 01	xx = 03	xx = 05	xx = 07	xx = 09	xx = 11

Indications: To stabilize and improve patella tracking.

# Tendon Strap

- Buttress eases the tension of chronic inflammation
- May also be used on the arm to relieve the pain of 'tennis elbow' (see page 13)

## Measure

Circumference below  
the patella

## Ordering Information

SA6050xx Tendon Strap

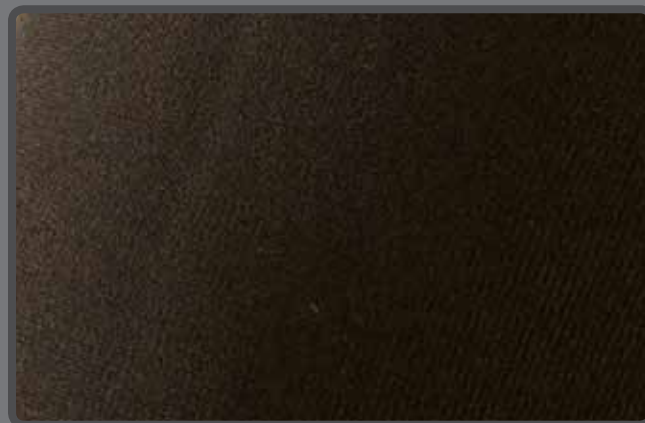
XS	S	M	L	XL
10" - 11"	11" - 12"	12" - 13"	13" - 15"	15" - 17"
xx = 01	xx = 03	xx = 05	xx = 07	xx = 09

Indications: For patellar tendonitis and chondromalacia.



# Neoprene Material

- Latex-free rubber material
- Elastic properties for compression and stability
- Provides warmth for aching joints



# ARC with Pillow

- One brace fits all patients—right or left, football player or gymnast
- Pistol grip molds to the hand and keeps the elbow seated in the sling
- Cryotherapy cutout
- Quick release buckle for easy don and doff
- Traditional pillow design

## Options

Standard or perforated cool design

## Ordering Information

AE050300 Standard  
AE055300 Cool

Indications: For non-surgical or post-operative support and immobilization of the injured shoulder where glenohumeral positioning is key.



# Clinic Shoulder Immobilizer

- Immobilizing strap secures shoulder in place
- Over-sized envelope accommodates large casts and dressings
- Adjustable padded strap with easy touch closure on front and back.
- Thumb loop keeps the elbow seated in the sling

## Measure

For envelope length

## Ordering Information

SA2005xx Clinic Shoulder Immobilizer

XS	S	M	L	XL
11"	13.5"	15.5"	17.5"	20"
xx = 01	xx = 03	xx = 05	xx = 07	xx = 09

Indications: For non-surgical or post-operative support and immobilization of the shoulder, mild sprains and strains of the shoulder, or for fractures of the arm.



# Clinic Arm Sling

- Over-sized envelope accommodates large casts and dressings
- Adjustable padded strap with easy touch closure on front and back
- Thumb loop keeps the elbow seated in the sling

## Measure

For envelope length

## Ordering Information

SA2000xx Clinic Arm Sling

XS	S	M	L	XL
11"	13.5"	15.5"	17.5"	20"
xx = 01	xx = 03	xx = 05	xx = 07	xx = 09

Indications: For non-surgical or post-operative support and immobilization, mild sprains and strains of the shoulder, or for fractures of the arm.



# Universal Arm Sling

- No trimming necessary, simply fold to proper length for most patients
- Large envelope accommodates large casts and dressings
- Adjustable slide buckle closure

## Measure

Universal Size

## Ordering Information

SA201000 Universal Arm Sling

Indications: For non-surgical or post operative support and immobilization, mild sprains and strains of the shoulder, or for fractures of the arm.





# Sling and Swathe

- Lightweight, soft foam sling supports the arm
- Swathe immobilizes the arm and shoulder
- Adjustable slide buckle straps

## Measure

Universal size

## Ordering Information

SA204000

Universal Sling and Swathe

Indications: For non-surgical or post-operative support and immobilization of the shoulder, mild sprains and strains of the shoulder, or for fractures of the arm.



# Soft Cervical Collar

- Medium density foam is contoured for better fit, support, and comfort
- Additional stockinette included
- Universal size fits necks 10.5" - 24"

## Measure

Sternal notch to chin  
for collar height

## Ordering Information

SA100120

2" Height

SA100125

2.5" Height

SA100130

3" Height

SA100140

4" Height

Indications: For Cervical Facet Syndrome, discogenic pain, Degenerative Disc Disease and muscle sprains or strains of the cervical region

COMING  
SOON



# Clavicle Support

- Urethane foam contoured for fit and comfort
- Easy touch closures are fully adjustable
- Easily adjust tension with rear buckles

## Measure

Chest circumference

## Ordering Information

SA3010xx

Clavicle Support

XS	S	M	L	XL
20" - 24"	24" - 30"	30" - 36"	36" - 42"	42" - 48"
xx = 01	xx = 03	xx = 05	xx = 07	xx = 09

Indications: For clavicular fractures and posture correction.



# LumboLux

- Elastic construction eases back pain with lumbar support while promoting proper range of motion
- Compound closure with two-stage compression
- Moldable and removable anterior and posterior panels
- 15° lordosis built-in

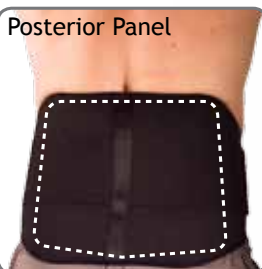
## Ordering Information

AB2101xx

LumboLux

## Measure

Waist



S	M	L	XL	2XL	3XL	4XL
26" - 32"	30" - 37"	34" - 41"	38" - 47"	44" - 54"	50" - 62"	56" - 68"
xx = 03	xx = 05	xx = 07	xx = 09	xx = 11	xx = 13	xx = 15

Indications: For chronic back pain, Discogenic Disc Disease, lumbar muscle or ligament sprain or strain, Spondylolithesis, Spondylolysis, and when disc pressure unloading is desired.

# Universal Wrist Lacer

- Adjust for size with removable dorsal stay
- Malleable and removable palmer stay for customized angulations
- Adjustable thumb cutout for better fit

## Options

8" short length or  
10" long length

## Measure

Universal Size

## Ordering Information

WA010111 Short 8", Left  
WA010211 Short 8", Right  
WA010101 Long 10", Left  
WA010201 Long 10", Right

COMING  
SOON

Indications: For immobilization and support for Carpal Tunnel Syndrome, rehab and post-cast support.



# Wrist Lacer

- Malleable palmer stay for customized angulations
- Dorsal stay for additional support and immobilization
- Adjustable thumb cutout for better fit
- Durable and breathable suede construction

## Options

8" short length or  
10" long length

## Measure

Wrist circumference

## Ordering Information

SA80010x Short 8", Left  
SA80015x Long 10", Left  
SA80020x Short 8", Right  
SA80025x Long 10", Right

XS	S	M	L	XL
Up to 5"	5" - 6"	6" - 7"	7" - 8"	8" - 9"
x = 1	x = 3	x = 5	x = 7	x = 9

Indications: For immobilization and support for Carpal Tunnel Syndrome, rehab and post-cast support.



# Wrist Lacer with Thumb

- Malleable palmer stay for customized angulations
- Dorsal stay for additional support and immobilization
- Additional aluminum stay along extensor surface of thumb
- Durable and breathable suede construction

## Measure

Wrist circumference

## Ordering Information

SA80510x 8" Thumb Spica, Left  
SA80520x 8" Thumb Spica, Right

XS	S	M	L	XL
Up to 5.5"	5.5" - 6"	6" - 7"	7" - 8"	8" - 9"
x = 1	x = 3	x = 5	x = 7	x = 9

Indications: For support and symptomatic relief of Gamekeeper's Thumb, deQuervain's Syndrome, scaphoid injury, Carpal Tunnel Syndrome, and sprains and strains.



# Trigger & Keeper's Thumb Support

- Wrap around one-hand application
- Malleable extensor stay for customized positioning
- Fits right and left hands

## Measure

Wrist circumference

## Ordering Information

SA80100x Trigger and Keeper's Thumb Support

S	M	L
Up to 6.5"	6.5" - 7.5"	7.5"+
x = 3	x = 5	x = 7

Indications: For immobilization, support, and relief of Gamekeeper's Thumb, Basal Joint Arthritis, and Thumb Tendonitis.





# Wrist Brace

- Malleable and removable palmer stay for customized angulations
- Dorsal stay for additional support and immobilization
- Comfortable and lightweight foam laminate construction

## Options

8" short length or  
10" long length

## Measure

Wrist circumference

## Ordering Information

SA80210x Short 8", Left  
SA80220x Short 8", Right  
SA80215x Long 10", Left  
SA80225x Long 10", Right

XS	S	M	L	XL
Up to 5"	5" - 6.5"	6.5" - 7.5"	7.5" - 8.5"	8.5"+
x = 1	x = 3	x = 5	x = 7	x = 9

Indications: For immobilization and support for Carpal Tunnel Syndrome, rehab and post-cast support.



# Wrist Brace with Thumb

- Malleable and removable palmer stay for customized angulations
- Dorsal stay for additional support and immobilization
- Additional aluminum stay along extensor surface of thumb
- Comfortable and lightweight foam laminate construction

## Measure

Wrist circumference

## Ordering Information

SA80310x 8" Thumb Spica, Left  
SA80320x 8" Thumb Spica, Right

XS	S	M	L	XL
Up to 5"	5" - 6"	6" - 7"	7" - 8"	8.5"+
x = 1	x = 3	x = 5	x = 7	x = 9

Indications: For support and symptomatic relief of Gamekeeper's Thumb, deQuervain's Syndrome, scaphoid injury, Carpal Tunnel Syndrome, and sprains and strains.



# Universal Tennis Elbow Strap

- Foam pad to alleviate stress over the medial/lateral epicondyle
- Semi-rigid plate disperses pressure for even compression
- Contoured shape around the elbow

## Measure

Universal size

## Ordering Information

SA208000 Universal Tennis Elbow Strap

Indications: For relief of medial/lateral epicondylitis and other forms of forearm and wrist pain.



COMING  
SOON

# Tendon Strap

- Buttress eases the pain of tennis elbow
- May also be used on the leg to relieve tension of chronic patellar inflammation (see page 11)

## Measure

Arm circumference

## Ordering Information

SA6050xx Tendon Strap

XS	S	M	L	XL
10" - 11"	11" - 12"	12" - 13"	13" - 15"	15" - 17"
xx = 01	xx = 03	xx = 05	xx = 07	xx = 09

Indications: For relief of medial/lateral epicondylitis and other forms of forearm and wrist pain.





# SOFT BRACING

## ORDERING INFORMATION

Hours 7am - 7pm CST  
1.888.253.3763 | voice  
972.660.5495 | fax  
[orders@bledsoebrace.com](mailto:orders@bledsoebrace.com) | email

## WARRANTY

All Bledsoe Products are warranted to be free from defects in material and workmanship. On soft bracing the warranty extends 90 days. Mechanical components are warranted for 180 days. These warranties apply to products that have not been modified or subjected to misuse, abuse or neglect.

Activity modification and proper rehabilitation are an essential part of a safe treatment program.