

ICON MICROPROCESSOR KNEE QUICK SETUP GUIDE

NOTICE: The battery is shipped with a partial-charge (up to 30%). We recommend charging it to 100% before use.

PRE-INSTALLATION CHECKLIST

The Icon Microprocessor Knee is fully assembled and undergoes electronic testing verification before it is shipped.

WHAT'S IN THE BOX:

HARDWARE :

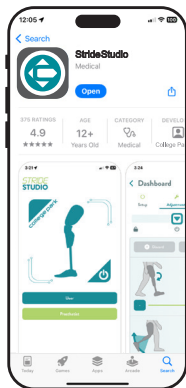
- ☐ Icon Microprocessor Knee
- ☐ Battery Charger w/ Adapter

INSTRUCTION MANUALS:

- ☐ Icon Microprocessor Knee Quick Setup Guide
- ☐ Icon Microprocessor Knee Technical Instructions
- ☐ Icon Microprocessor Knee User Manual
- ☐ Stride Studio App Instructions

STRIDE STUDIO APP SETUP

Note: It is strongly recommended that you set up the app and verify Icon knee function prior to your patient's appointment.



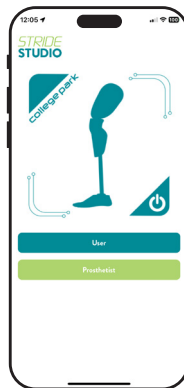
1. Download Stride Studio app

College Park's Stride Studio App is available for both iOS & Android devices. Download Stride Studio from Apple App Store or Google Play Store.

Minimum Operating Systems:

- Apple iOS 15
- Android Version 8 (Oreo)

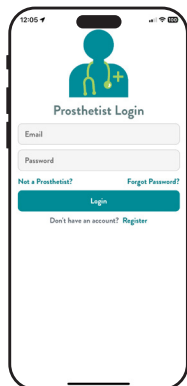
Select Stride Studio icon on the device to launch the app.



2. Landing Screen

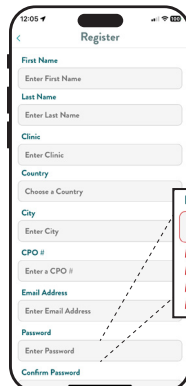
The landing screen allows you to select whether you are the user or prosthetist

Select "Prosthetist" and you will be taken to the Prosthetist Login Screen.



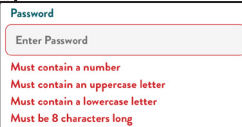
3. Prosthetist Login

When using the app for the first time, clinicians must register for an account. Select “Register”



4. Register

Register for an account by completing the mobile registration form in the app



ICON KNEE SETUP

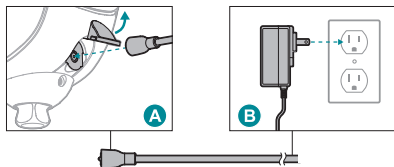
5. Power on the Icon knee



Press and hold the power button for 3 seconds to turn on the Icon.

6. Charge the Icon Knee Battery

The battery is shipped with a partial-charge (up to 30%). We recommend charging the battery to 100% before use.

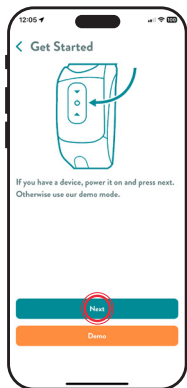


Only charge the knee on a flat, level surface and in a cool, dry location away from sources of heat and moisture. Plug the wall adapter into the main AC supply **B**.

To connect the magnetic connector to the back of the knee, open the dust cover and insert the magnetic connector **A**.

The LED will indicate the state of the charge and the knee will automatically begin charging.

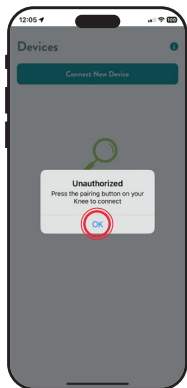
PAIR DEVICE



7. Enable Bluetooth ⚡
Go to Settings on the phone or tablet, then tap Bluetooth.

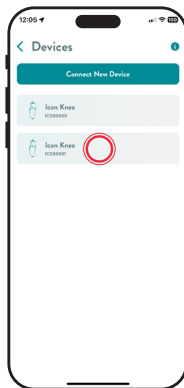
8. Log into Stride Studio app
Launch the Stride Studio app and log in. The app will prompt you to allow it access to Bluetooth. You must grant it access. You will land on the “Get Started” screen. Select “Next” to pair the Icon knee.

“Demo” mode allows you to view the settings without pairing to a knee.



The app will prompt you to press the pairing (power) button on the back of the knee.

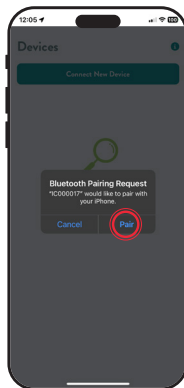
Note: Phone or tablet must be closer than 33 feet (10 meters) of the Icon knee.



9. Begin Bluetooth Pairing

The knee must be paired to the Stride Studio app when it is used for the first time. Locate the serial number of the knee in the app and select it.

Note: The knee will be identified by the Serial Number, which is located inside of the frame, on the right side.



At this time, the LED turns blue. Press the power button for 1 second and the app will request to be paired with your device.



10. If this is your first time setting up an Icon knee, the app will play a mandatory training video.

This is a brief overview of the physical setup and programming of the knee. It is also accessible later through College Park Campus.

Note: This video will only play the first time the prosthetist sets up a knee.

11. Congratulations!

The Icon knee is ready for patient fitting. Remember to charge the battery fully before delivering the prosthesis.



MEDENVOY SWITZERLAND

Gotthardstrasse 28, 6302 Zug, Switzerland



MADE IN THE USA

©2024 College Park Industries, Inc. All rights reserved.



1136 QS IC 240105



COLLEGE PARK INDUSTRIES, INC

27955 College Park Dr. Warren, MI 48088 USA



EMERGO EUROPE

Westervoortsedijk 60, 6827 AT Arnhem, The Netherlands

Australian Sponsor

EMERGO AUSTRALIA

Level 20, Tower II, Darling Park, 201 Sussex Street,
Sydney, NSW 2000 Australia