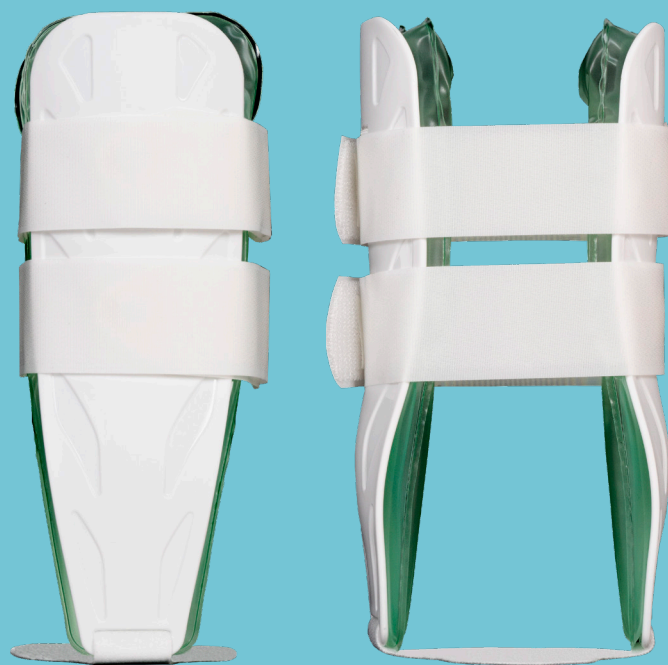


PROACTIVE WEAR®

Air/Gel Stirrup Ankle

The ProActive Wear® Air/Gel Stirrup Ankle provides stability and support to unstable or injured ankles. The air/gel bladder lined with soft foam provides medial/lateral support.

- Polypropylene outer shells are anatomically contoured
- Fits right or left
- Soft, adjustable foot piece connects the shells
- May be used for cold therapy treatment
- Latex Free
- PDAC Approved: L4350



Sizing Chart

SKU	SIZE	HEIGHT
PA-ASA-P	PEDIATRIC	6"
PA-ASA-SM	SMALL	8.75"
PA-ASA-T	TRAINER	9.5"
PA-ASA-R	REGULAR	10"